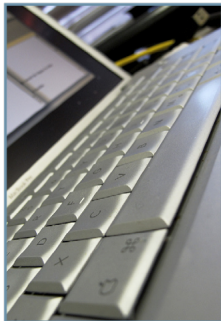


ILLINOIS

COLLEGE OF EDUCATION

Distinctive, Relevant, and Diverse

October 19, 2012



Highly-Ranked, Well Respected 2013 U.S. News & World Report Rankings

Colleges of Education

1. Vanderbilt University (Peabody) (TN)
2. Harvard University (MA)
3. University of Texas–Austin
4. Stanford University (CA)
5. Teachers College, Columbia University
6. Johns Hopkins University (MD)
6. University of California–Los Angeles
8. University of Oregon
9. Northwestern University (IL)
9. University of Pennsylvania
9. University of Wisconsin–Madison
12. University of Michigan–Ann Arbor
13. University of California–Berkeley
13. University of Washington
15. University of Southern California (Rossier)
16. Michigan State University
17. New York University (Steinhardt)
18. Boston College (Lynch)
18. Ohio State University
18. University of Kansas
21. Indiana University–Bloomington
22. University of Illinois–Urbana-Champaign
23. University of Virginia (Curry)
24. University of Pittsburgh
24. Utah State University
26. Arizona State University

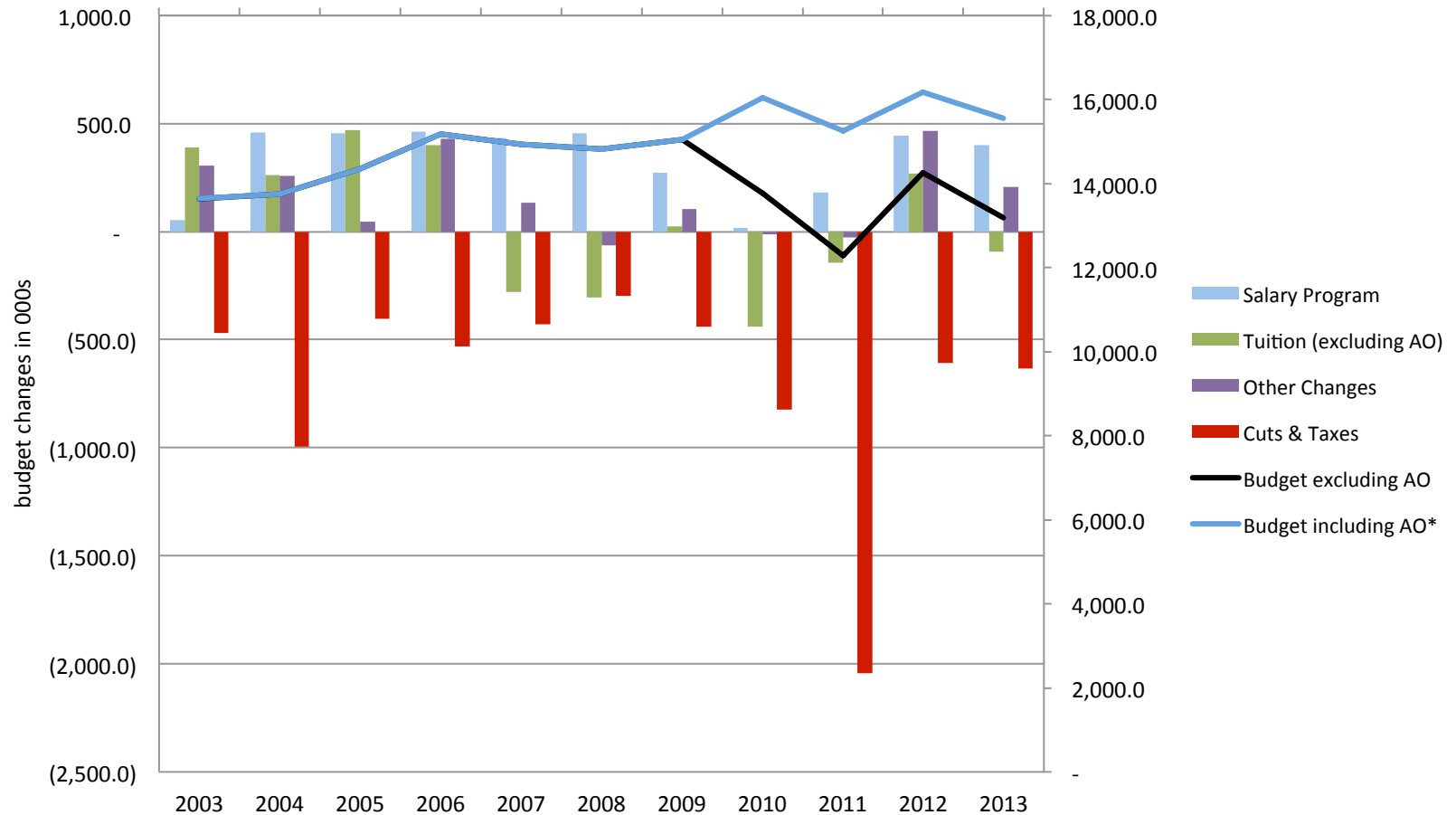
Departmental Rankings

- Curriculum and Instruction - 6
- Educational Psychology - 4
- Elementary Education – 10
- Secondary Education - 10
- Special Education - 9

** 2013, COE had 5 of the 42 of the Top-10 ranked programs on campus.*



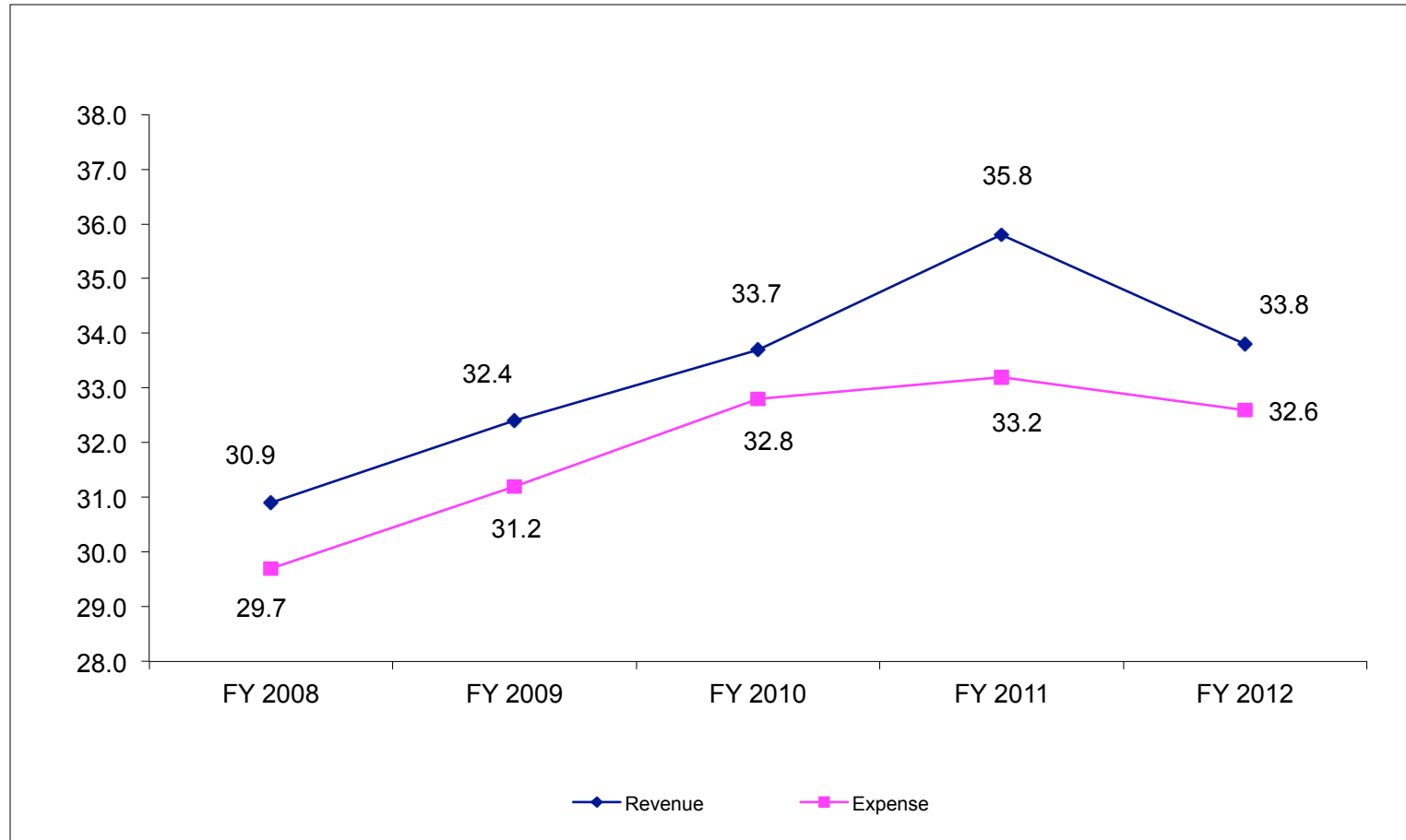
10 Year Trend State Budget Allocation



* Serial cuts not connected to our performance & impacting on our strategic plans.



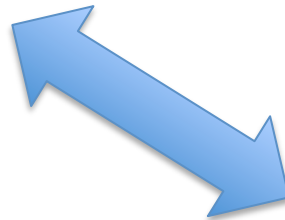
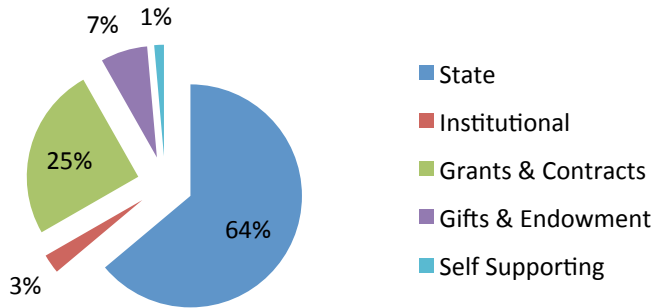
Revenues & Expenses FY 2008 - FY 2012 (Millions)



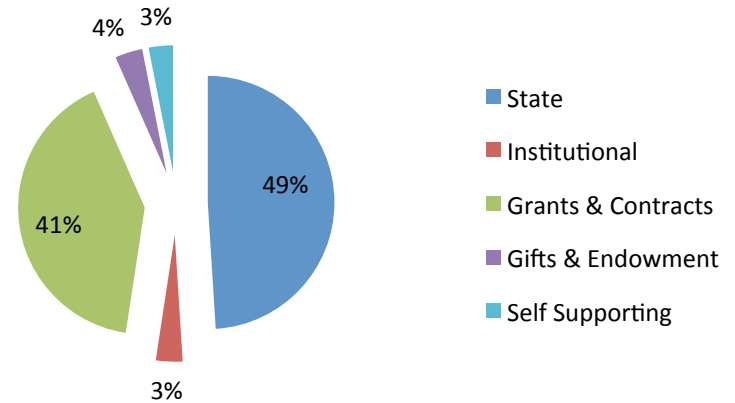
** In 2006 our expenditures crossed over and were above our revenue.*

Expenditures by Fund Source

FY08 Expenditures by Type



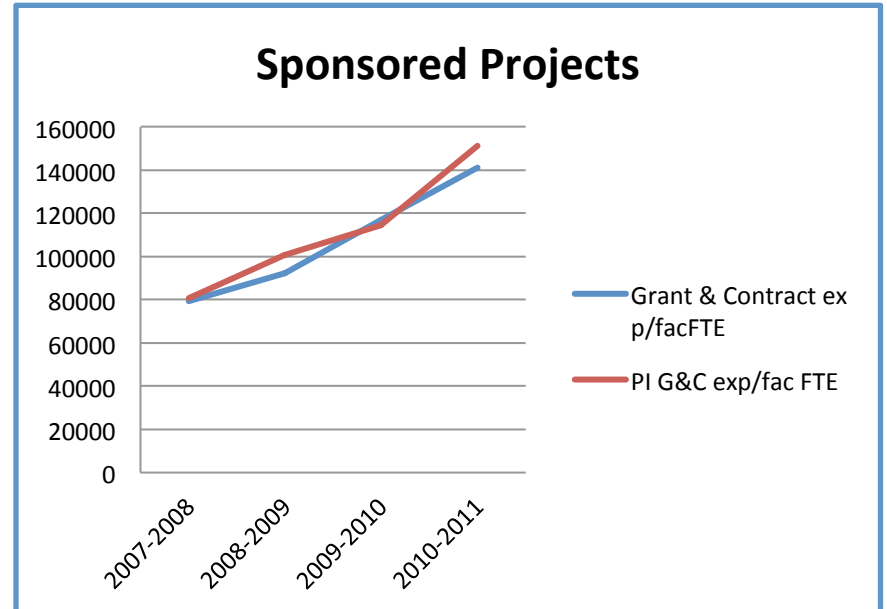
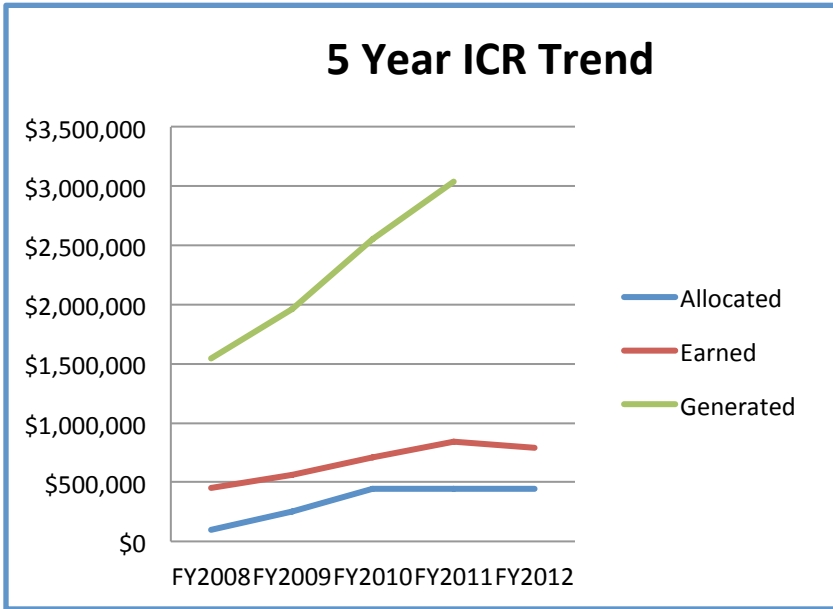
FY12 Expenditures by Type



** GRF steadily reducing – budget cuts and diversification of revenue.*



Research Trends

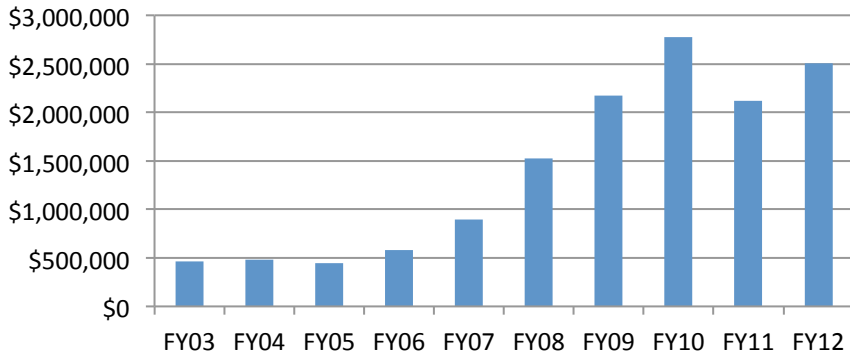


* Steep increase in performance despite 20% reduction of faculty from 96 to 79 today over last 6 years.

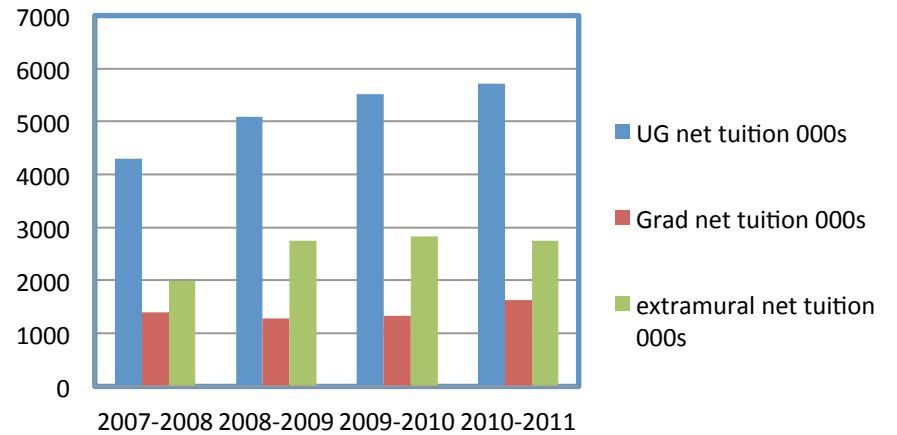


Growing Revenue

Online and Distance Tuition



Tuition



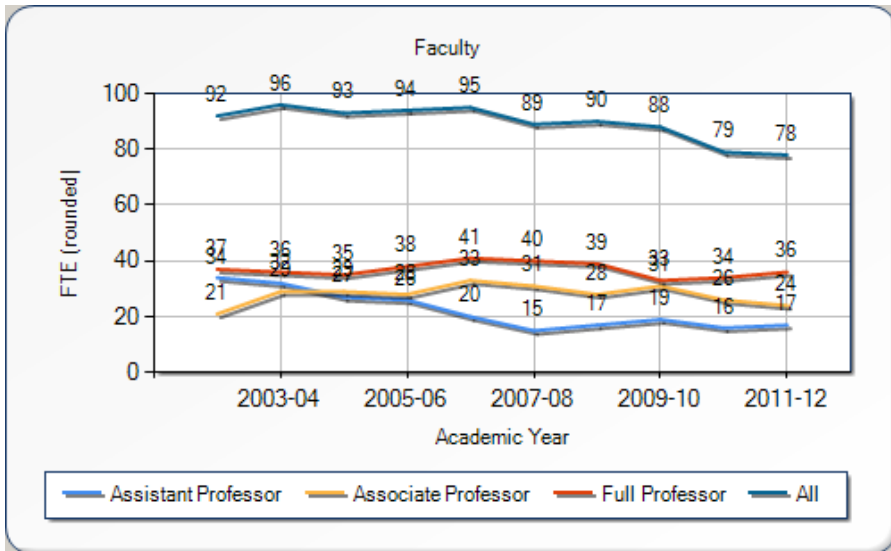
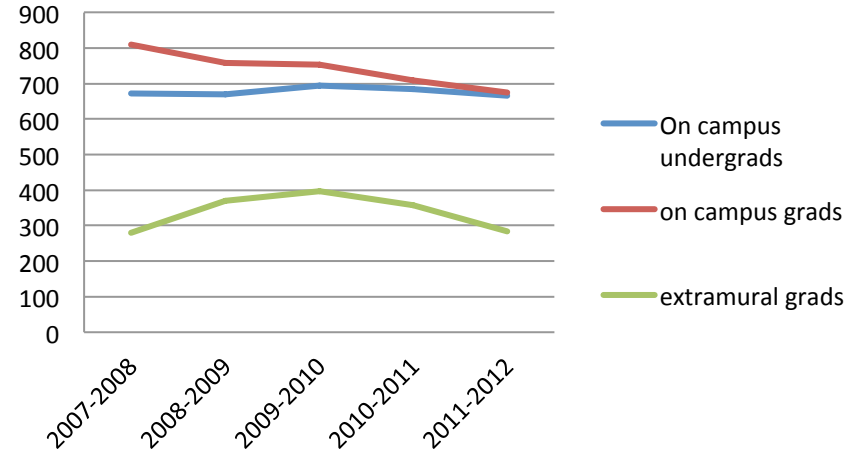
** Strategic goal to grow alternative revenues and cross -subsidies PhD programs*



2012-2013 Student Enrollments

- 666 Undergraduates
- 675 Graduate
 - 404 doctoral
 - 271 masters
- 285 extramural/online

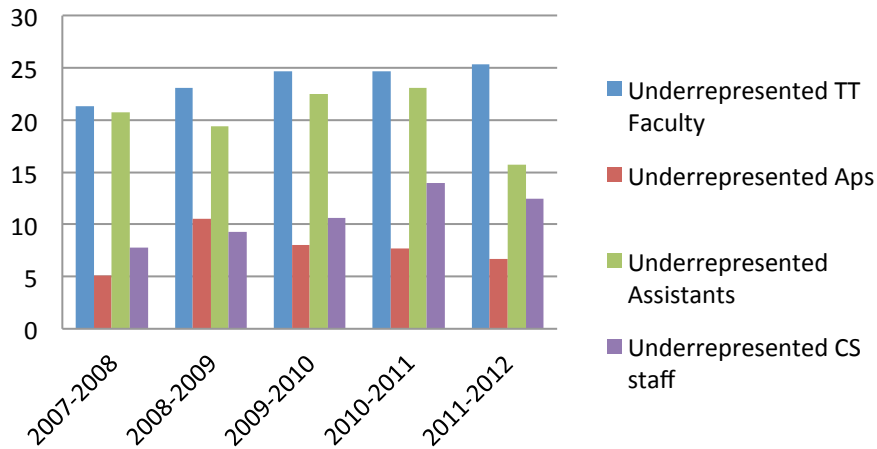
Student Enrollments



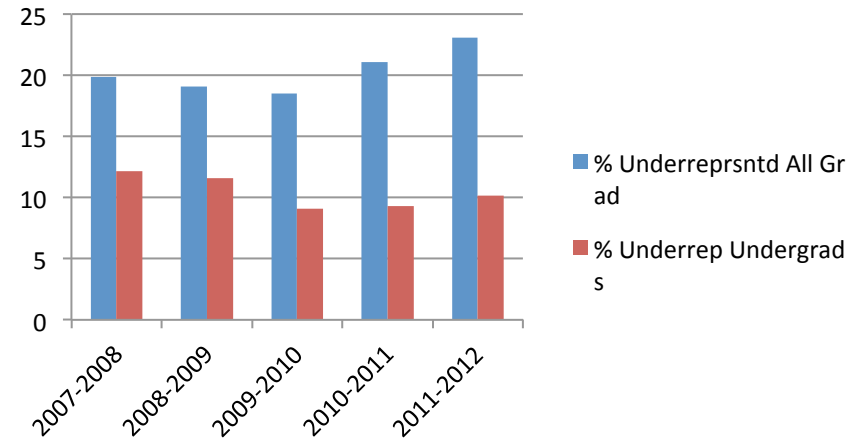
* Down to 79 Tenure system faculty - 5 approved searches underway.



Workforce Diversity



Student Diversity



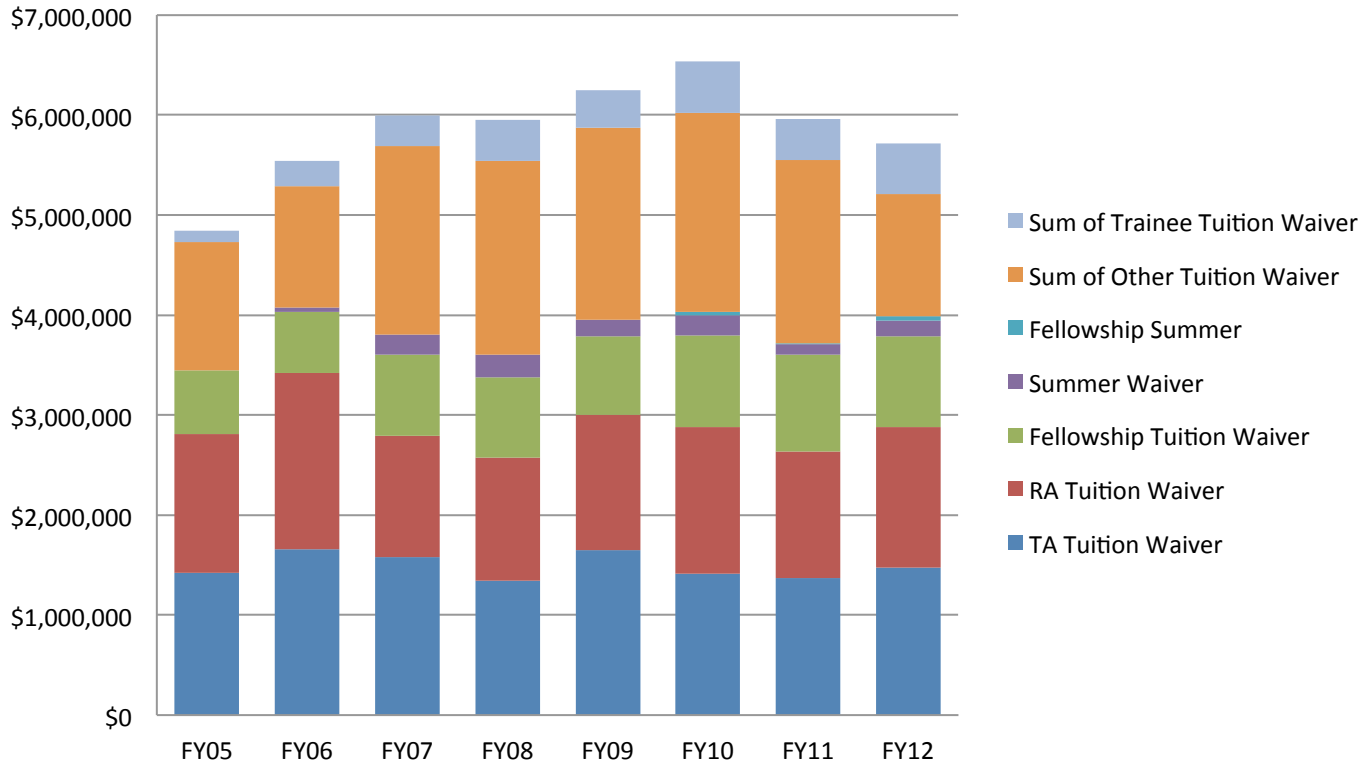
FACULTY	Campus	CoE
Women	32.0%	58.2 %
Underrepresented	10.2%	25.3%

STUDENTS	Campus	CoE
Women	46.1%	79.4 %
Underrepresented	11.6%	17.8 %

** Strong tradition of recruiting and maintaining diverse faculty and students.*



Contribution of Waivers Types to Total



** Plan for sustaining strong grad program vital to our mission, reputation and contribution to society.*



FROM

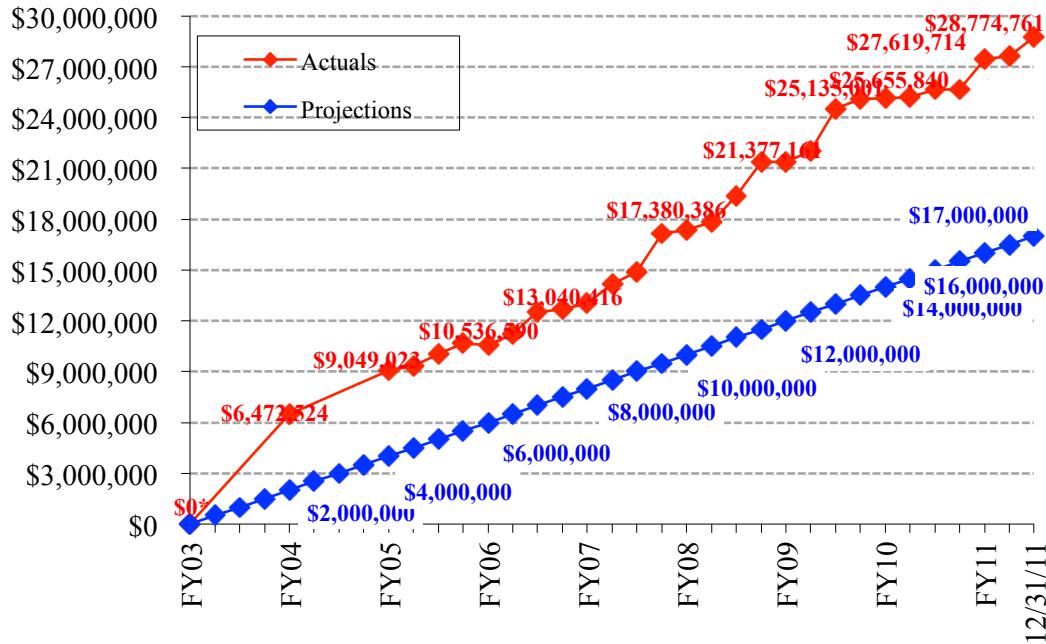


TO

<p>Undergraduate Programs, Culture, and Targets</p>	<p>UG STUDENTS 666</p> <ul style="list-style-type: none"> • NEW Teacher Education Redesign • NEW Non Cert UG program • NEW Baccalaureate for secondary program
<p>Graduate Programs, Culture and Targets</p>	<p>GRAD TOTAL 675 (PHD 404, MASTER 271)</p> <ul style="list-style-type: none"> • Eliminating collapsing & refining graduate programs • Managing targets and aligned to Teacher Education Redesign needs
<p>E-Learning Ecologies</p>	<p>EXTRAMURAL/ONLINE STUDENTS 285</p> <ul style="list-style-type: none"> • 7 MA programs + 5 Endorsements/Certificate programs • Growth goals – new marketing and oversight – faculty recruitment
<p>International Programs</p>	<p>SELF-SUSTAINING REVENUE & GROWTH TARGETS</p> <ul style="list-style-type: none"> • China desk - joint programs (capacity building in early childhood education and preparation of global instructors & educational professionals) • Study abroad goal for all UG students
<p>Entrepreneurship and Commercialization of IP</p>	<p>TAKING OUR IP TO MARKET</p> <ul style="list-style-type: none"> • Intern from Technology Transfer • 4 patents



University of Illinois at Urbana-Champaign Brilliant Futures Campaign Progress Report As of December 31, 2011



Phase 0	Short Term HVAC Design	\$ 1,792,710
Phase I	New Construction	\$30,599,785
Phase II	Existing Building Partial Demolition	\$ 2,645,000
Phase III	Existing Building Renovation	\$18,187,000
Phase IV	Public Place House New Construction	\$ 4,680,000
Budget Total All Phases		\$57,904,495

* Met and exceeded set goals – need stretch goals and campus support for buildings.

College of Education and the Campus Visioning Excellence “Education”



A word cloud of education-related terms. The words are arranged in a roughly circular pattern. The largest word is 'access' in dark blue. Other prominent words include 'higher education' in light blue, 'affordability' in orange, 'learning and critical thinking' in brown, 'education quality and value' in green, 'STEM' in orange, and 'p-12' in brown. Smaller words include 'diversity', 'job training', 'teaching, leadership and mentoring', 'educational reform and delivery', and 'global education'.

higher education
diversity
affordability
access
job training
teaching, leadership and mentoring
STEM
learning and critical thinking
p-12
education quality and value
educational reform and delivery
global education

A Major Producer of Teachers in Illinois

99% state pass rate – first time attempts

FY2007 - FY2011 Public University Program Completions**

	FY2007	FY2008	FY2009	FY2010	FY2011	AVERAGE	ACT score*
Illinois State University	1,470	1,464	1,359	1,523	1,419	1447	22
Eastern Illinois University	998	848	1,061	1,041	1,071	1004	19
Northern Illinois University	936	1,029	861	810	696	866	19
University of Illinois at Urbana-Champaign	754	697	717	723	606	699	26
Northeastern Illinois University	739	612	629	591	680	650	17
Western Illinois University	570	557	579	418	387	502	18
Governors State University	387	500	462	466	415	446	NA
Southern Ill. Univ. at Edwardsville	436	384	435	431	377	413	19
Southern Ill. Univ. at Carbondale	445	453	386	368	332	397	18
University of Illinois at Chicago	421	471	366	425	257	388	21
Chicago State University	190	241	234	181	215	212	16
University of Illinois at Springfield	90	117	80	124	62	95	20
All	7,436	7,373	7,169	7,101	6,517	7119	
**Ranked in descending order by average							
* Composite ACT score reported by College Navigator							

COLLEGE OF EDUCATION: Social Equality and Cultural Understanding in Action

Equity and Access **Diversity, Multicultural Education, and Inclusiveness**
Gender and Sexuality Studies

EXCELLENCE AND DIVERSITY

Social/Behavioral Aspects of Learning, Understanding and Leadership

Culturally Responsive Teaching, Assessment, and Evaluation **Global Relations and Human Rights** Childhood Cultures
Education and Social Justice



not the end.....

